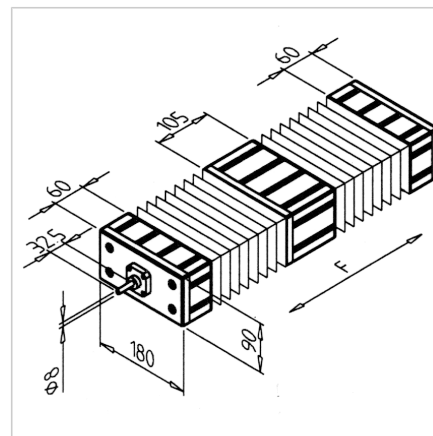
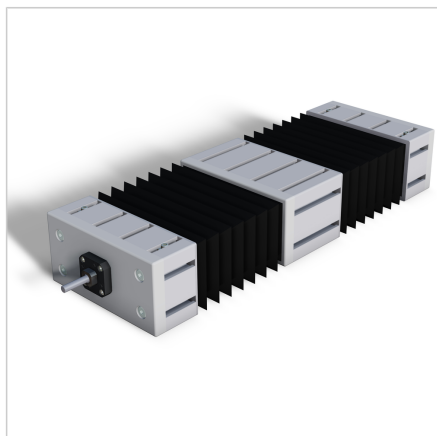


LINEAR MODULE LB 180 STROKE = XXX MM

Code: 280179/0

Linear modules LB 180 offer compact, precise, and reliable linear motion, suitable for creating versatile multi-axis systems and efficient handling solutions.

[Link to the product →](#)



Technical data/items supplied

- Aluminium, anodized E6/EV1
- Max. load [F] approx. 1,000 N
- Ready-to-mount linear module of profile 90 x 180
- Drive unit with rolled circulated ball spindle \varnothing 14 mm, incline 4
- Pitch error / 300 mm: 210 μ m (class Ct10)
- Slide guidance on 4 linear ball bearings with hardened ground precision shafts \varnothing 20 mm, total length max. 950 mm
- Shaft end on the fixed side machined according to customer specifications for engine or crank connection
- Shafts and spindles covered with protective bellows
- Positioning accuracy: \pm 0,1 mm
- Also available without bellows on request. The overall length of units without bellows is reduced, resulting in a maximum stroke of 708mm for smaller installation spaces.

Applications

- Handling systems
- Z-axis in portals
- Multiple axis systems
- Grabbing units