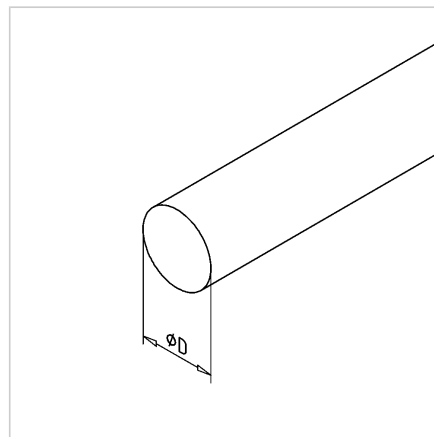
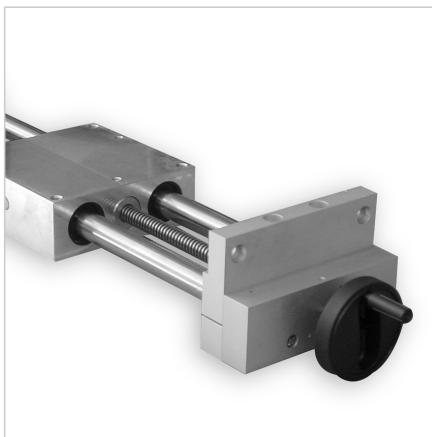
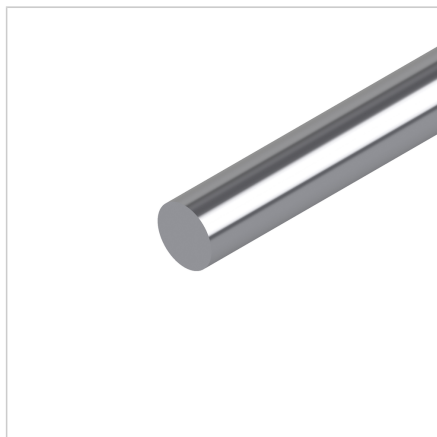


## SHAFT SUPPORTING PROFILE 12

Code: 171744/0

Linear shaft D 20 mm, h6 CF 53 for linear guides provides precise guidance and support in linear systems.

[Link to the product →](#)



### Technical data/items supplied

- Steel, pulled, hardened, polished
- Cf.53, hardened to  $62 \pm 4$  HRC, polished h6
- Weight = 2.470 kg/m
- Bar length = 6 m

### Applications

- Linear guide system LB
- Linear guides with ball or sliding bushings
- Mechanical elements or drive elements

### Assembly

- Secure with centering bushing into shaft support block