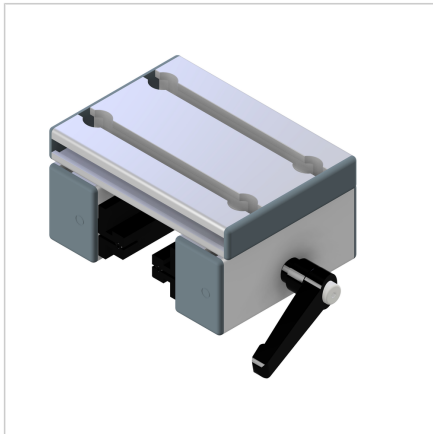


## SLIDE LWN 32X45-45 WITH CLAMPING DEVICE LATERAL

Code: 280192/2

Linear carriage LWN 32 x 45 series 45 with lateral clamping unit allows precise adjustment and reliable locking in aluminum profile constructions.

[Link to the product →](#)



### Technical data/items supplied

- Aluminium, anodized E6/EV1
- Fully mounted carriage
- 2 slide rails LN
- End caps
- Clearance adjusted
- Weight = 0.716 kg/piece

### Applications

- Simple linear guides
- Slide units

### Other versions

- Different slide lengths
- With slide clamping device at top **part no. 280192/1**