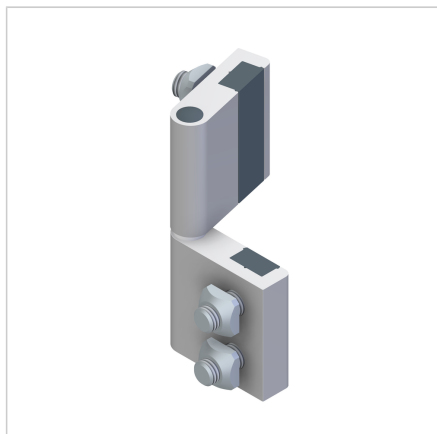


SWING-OUT HINGE 45, WITH OUT REAR BAR

Code: 211096/2

Hinge for profile 45 without rear bar enables flexible connection of aluminium components at various angles.

[Link to the product →](#)



Technical data/items supplied

- Aluminium, anodized E6/EV1
- With stainless steel shaft
- With fastening material steel, zinc plated
- End caps
- Load capacity up to 400 N
- Weight = 0.149 kg/piece

Applications

- Detachable doors, hatches, moving parts on profiles 45
- Connection of profiles 45 at various angles
- Guard unit fixing angle
- If the hinges are arranged in the opposite direction, non-detachable and horizontally mounted structures can also be produced

Assembly

- For fixing directly on surface elements or on profile surfaces we deliver hinge 45 without fixing element **part no. 211096/2**
- 1: Lift removable
- 2: Arrangement is not detachable