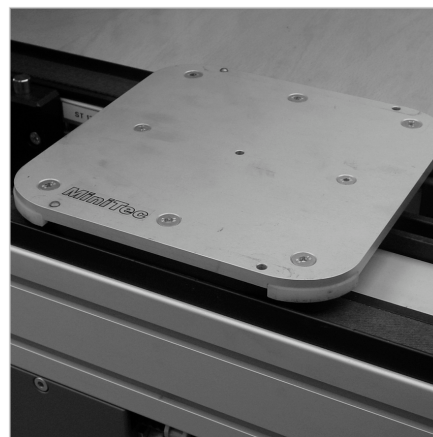
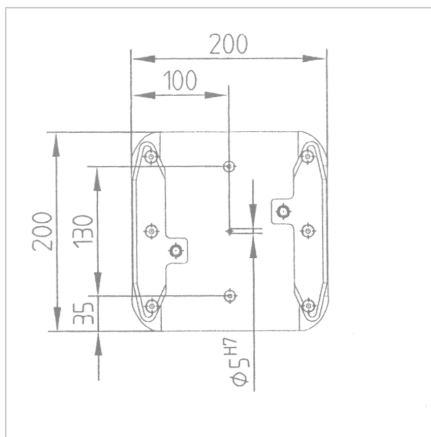
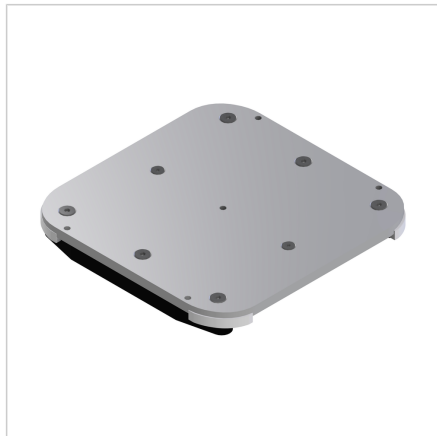


WORKPIECE CARRIER 200

Code: 431000/0

[Link to the product →](#)



Technical data/items supplied

- Carrier plate Al, progressed on all sides and anodized with centering hole 5H7
- 4 positioning pins, st
- Sliding shoe made of extremely abrasion-resistant PE, with integrated stop for brake
- 2 damping pins, St, for proximity switches
- dimensions 200 x 200 mm
- Max. load capacity: 100 N
- Weight = 1.152 kg/piece

Applications

- Recording of workpieces, devices, identification and data storage systems

Assembly

- Standard-WTs are delivered without holder holes
- Mounting holes for workpieces, devices or identification systems are manufactured according to customer specifications